



Ansell



 **RightCycle**[™]
SCIENTIFIC

Supporting Your
Journey to ZERO Waste

How We Support Sustainability

1 Work with Responsible Partners

People
We are a recognized leader for safe, respectful and inclusive workplaces in our industry.

3 GOOD HEALTH AND WELL-BEING

8 DECENT WORK AND ECONOMIC GROWTH

10 REDUCED INEQUALITIES

Planet
We pioneer new solutions that reduce our environmental impact across our operations and support a healthier planet.

6 CLEAN WATER AND SANITATION

7 AFFORDABLE AND CLEAN ENERGY

12 RESPONSIBLE CONSUMPTION AND PRODUCTION

13 CLIMATE ACTION

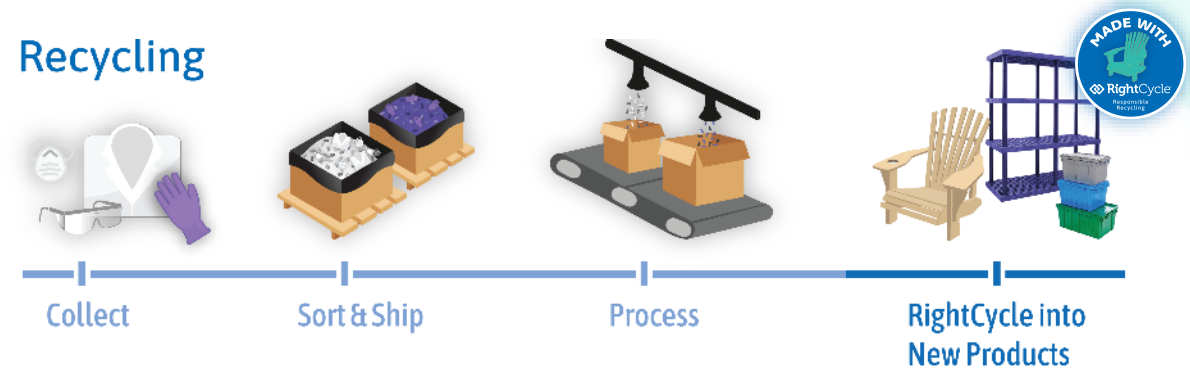
2 Make the Right Choices

Ansell **GUARDIAN**[®]

Ansell Earth

3 End-of-Life Solutions

Responsible, Affordable and Transparent Recycling by RightCycle™



Supporting Your Journey to Zero Waste

Ansell

RightCycle
By Industry-Clear ProfessionalsSM

 **RightCycle**TM
SCIENTIFIC

 **RightCycle**TM
SCIENTIFIC

RECYCLE



Responsible, Affordable and Transparent



The **first** manufacturer-led recycling program for **non-hazardous PPE**.



Creates an end-of-life solution for single-use nitrile gloves and body protection used in labs, cleanrooms and industrial facilities.



Since 2011, **7.0 million pounds** of used PPE waste has been RightCycled!



95% recycling yield rate and lower GHG emissions than virgin plastic manufacturing.*



Recycling is FREE; customers only pay for freight to a consolidation center or recycling partner.



Transparency throughout the process. In-person or virtual audits of recycling facilities available upon request.



The RightCycle™ Process

Ansell

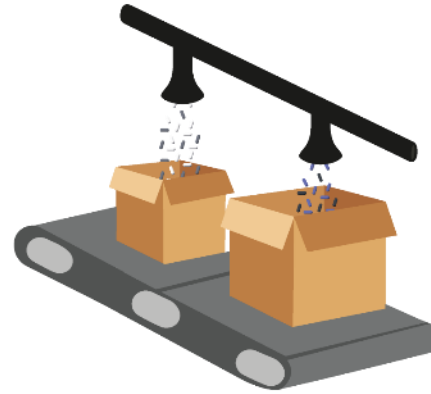
Recycling



Eligible Ansell products are worn in your facility.



Used products and packaging are collected, sorted and shipped to our recycling centers.



Used products and packaging are sorted and processed into plastic pellets.



Materials are molded into new durable goods.



What can be recycled?



Eligible Ansell products* used in non-hazardous applications:

- Nitrile & Latex Gloves
- Garments/Apparel
- Hoods
- Bouffant Caps
- Respirators
- Beard Covers
- Shoe & Boot Covers
- Safety Glasses & Goggles
- Flexible Film Plastic Packaging

* Contact your Ansell sales representative or RightCycle@Ansell.com for a complete list of eligible products.

RightCycle™ Step-by-Step

Ansell

 **RightCycle™**
SCIENTIFIC





Connects RightCycle™ participants directly to the RightCycle™ Team for waste stream approvals (an online waste management tool).

A **Create Waste Profile via Wastebits™. It only takes 5-10 minutes.**

- Email RightCycle@Ansell.com to initiate customer set up.
- Once company set up is complete, customer can submit their waste profile.

B **RightCycle™ partner reviews within 2 business days.**

- Ensures EHS program compliance for site and employees
- Ensures compatibility with their recycling processes

C **Once waste profile is approved then enrollment is complete; waste collection may begin!**

Have questions about Wastebits? Reach out to RightCycle@Ansell.com

Collection of used, eligible items

Bin placement and visual management are critical aspects of a successful recycling program, and our sales professionals can help with implementation.

How to Collect:

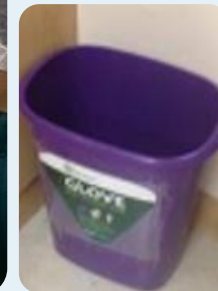
- 1 Gloves separate from all other materials
- 2 All other eligible PPE can be co-mingled
- 3 Flexible film packaging can be sorted with either gloves or all other PPE.

How to Sort:

- ✓ Gloves
- ✓ Flex film packaging

SEPARATE FROM

- ✓ Coveralls
- ✓ Eyewear
- ✓ Respirators
- ✓ Flex film packaging



Used products are consolidated & shipped



Used products collected in a gaylord box, either 24" or 48" tall, on a pallet.

- Segregate gloves from all other eligible products.
- Flexible film packaging can be sorted with either gloves or all other used products.

Determine where to ship used materials

RightCycle™ customers can choose to leverage a consolidation site or ship direct to our processing partner to manage shipping costs.

Consolidation Sites



West Coast Consolidation
9460 North Virginia St., Building B
Reno, NV 89506 USA



Ansell Canada c/o CDEC
800 Rue Sud
Cowansville ,QC J2K2K8

Processing Partner



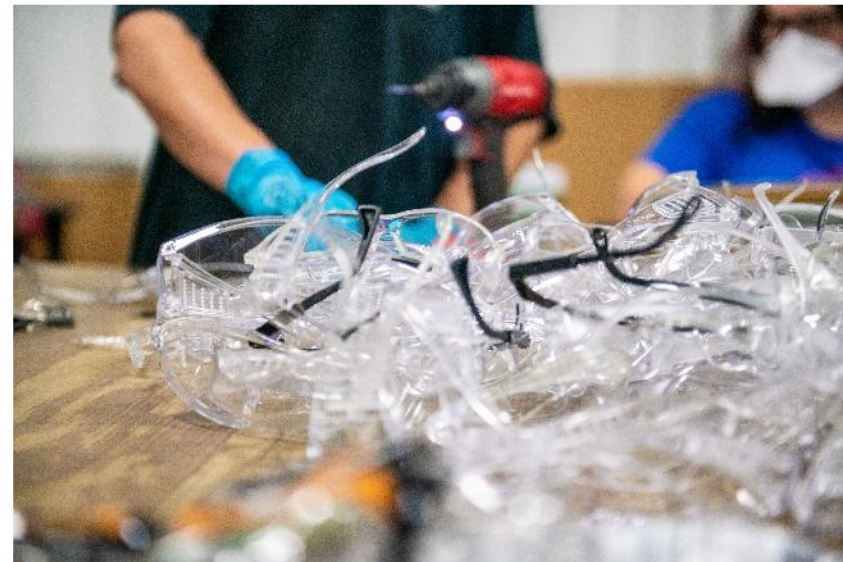
270 Jack Burlingame Drive
Millwood, WV 25262, USA

Used products shipped to our recycling centers & sorted



Jackson County
Developmental Center

- Non-profit social enterprise
- Serves 6 counties in Millwood, WV
- Provides job training and life skills for disabled and disadvantaged workers, including those with traumatic brain injuries
- Helps address your Corporate Social Responsibility (CSR) goals



Used products are converted



Plastics recycler processes all used products and works with various molded plastics manufacturers to make new products.



Eligible PPE processed into new resin

Resin molded into new consumer goods

Additional Support

Ansell


 **RightCycle**[™]
SCIENTIFIC



Dashboard

Shipping Document Net Weight Diversion

Sites: All Sites



% OF ANNUAL DIVERSION GOAL
52.199%
CURRENT YTD DIVERSION
528,732 lbs
ANNUAL DIVERSION GOAL
1,012,920 lbs





CO2 Equivalents Calculator

PPE Diverted YTD (lbs): 528732 Reset

275.803
Tons CO₂e Total

551,606.898 lbs.	608,041.8 kg.	1,961,425.161 water bottles
------------------	---------------	-----------------------------

EPA Equivalents

 4,137.052 Tree seedlings grown for 10 years.	 637,105.967 Miles driven by a gas-powered car.
 278,009.877 Pounds of coal burned.	 20,228,252.369 Smartphones charged.

These estimates are approximate and should not be used for emission inventories or formal carbon emissions analysis. Estimates based on United States Environmental Protection Agency (EPA) Greenhouse Gas Equivalencies Calculator.



If shipping to a consolidation site...

- Product will be weighed and logged in as Estimated Net Weight
- Marked as Received by Consolidation
- When a full truckload has been generated, product will be shipped to JCDC for final weight and receipt in Wastebits™.

If shipping to JCDC...

- Product will be weighed and logged in as Total RightCycle™ Net Weight
- Marked as Received by Processing Facility

Greenovation Award Program

A select number of RightCycle™ customers are chosen each year to receive the Greenovation Award, recognizing them for their leadership in landfill waste diversion.



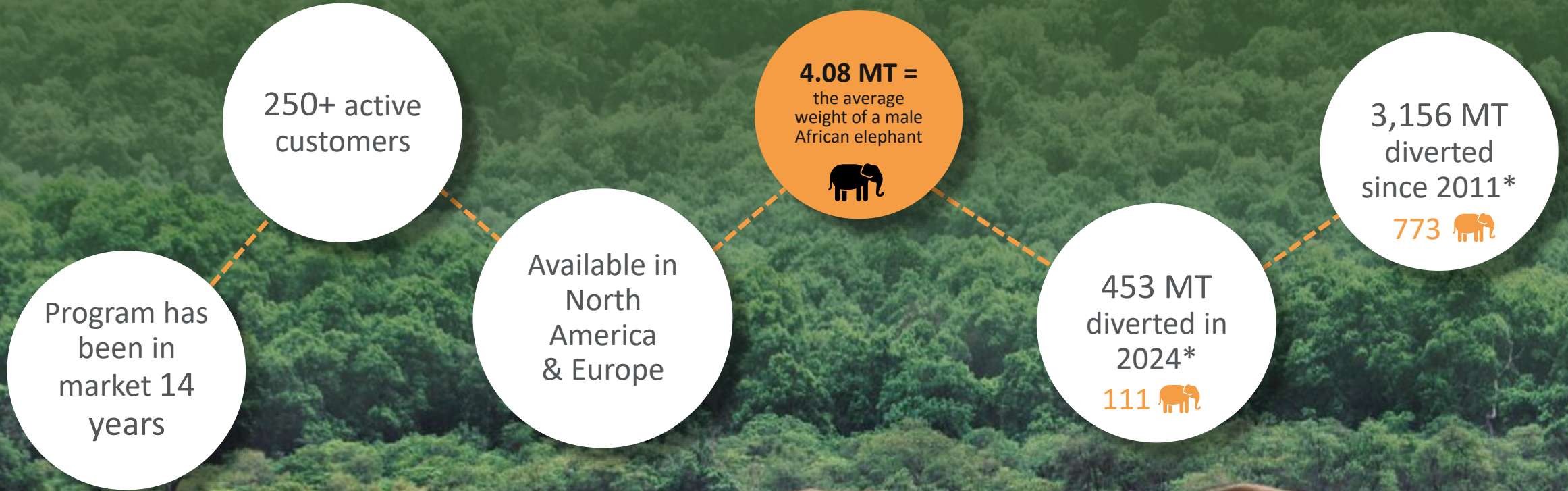
Why partner with us?

Ansell is a responsible business partner that will support your Environmental, Social & Governance (ESG) goals.

- ✓ **Aggressive, impactful and transparent 2040 sustainability targets.**
 - Fully aligned with the disclosure requirements of the Taskforce on Climate-related Financial Disclosures (TCFD).
- ✓ **Responsible landfill diversion programs through The RightCycle™ Program.**
 - Supports your zero or near-zero waste goals!
- ✓ **Resources before, during and after implementation.**
 - WasteBits™, dedicated RightCycle Specialist, visual management materials, field sales support.
- ✓ **Transparency and tracking.**
 - Real-time data, on-site or virtual audits of our recycling partners.



Our journey towards ZERO waste



* Source: 2025 WasteBits and FY2024 Ansell proprietary insights. Elephant statistics obtained at www.seaworld.com

Thank You!

Ansell

 **RightCycle**[™]
SCIENTIFIC

